



# **A window into the boardroom:**

---

## **emerging approaches to unlocking investment value through ESG analysis**

John Wilson, Head of Corporate Governance, Engagement and Research

September 2017

Please see important disclosures at the end of this presentation.



# Robots could wipe out another 6 million retail jobs

by Chris Isidore [@CNNMoney](#)

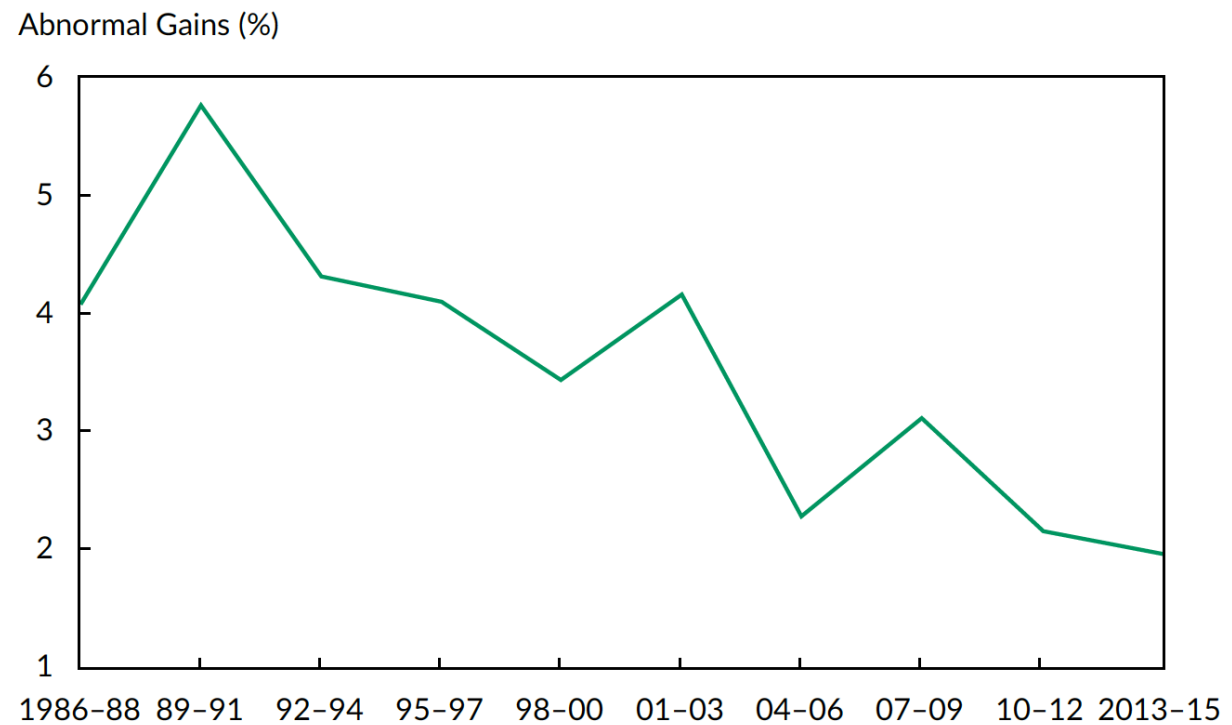
🕒 May 19, 2017: 12:21 PM ET

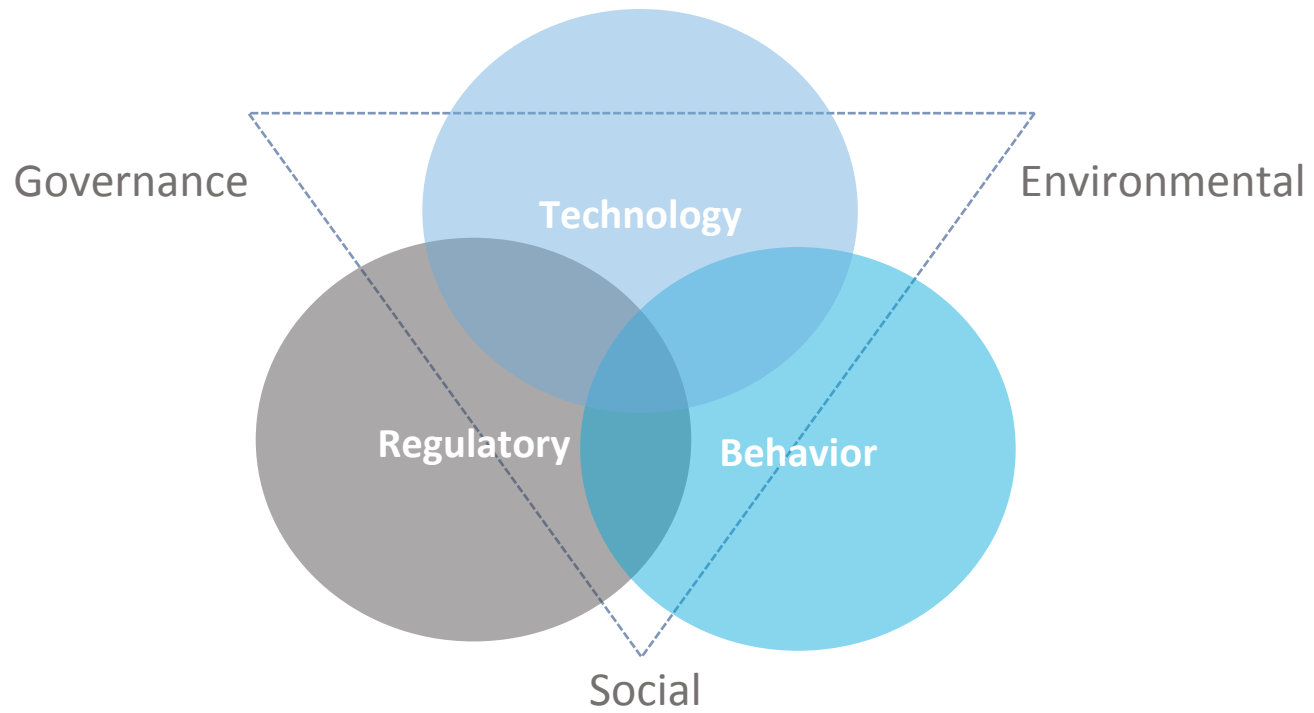


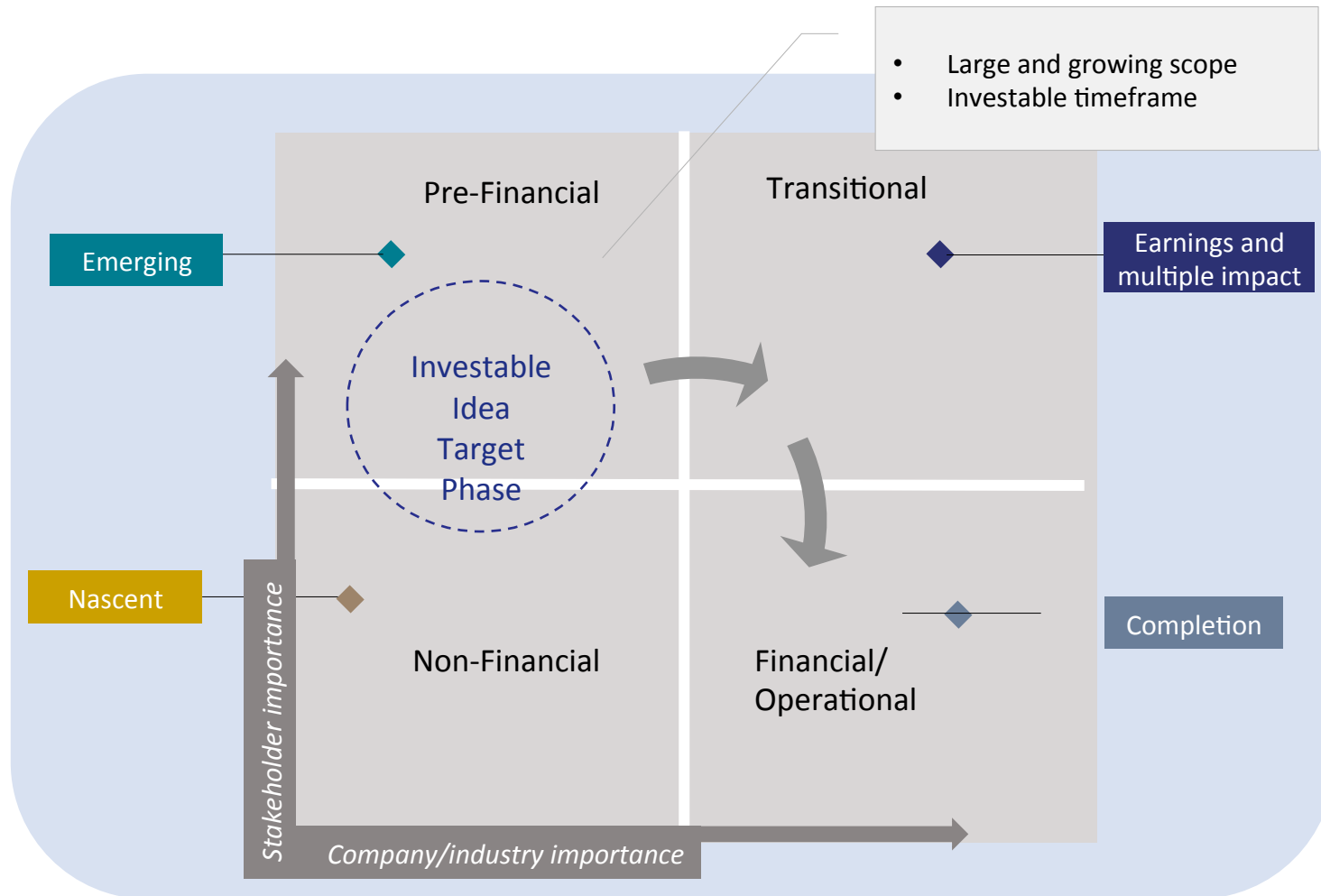
# Time to Change Your Investment Model

Feng Gu and Baruch Lev

**Figure 1.** The Shrinking Gains from the Perfect Prediction of Consensus Hits and Beats







Adapted from Cornerstone Capital's *Shareholder Alignment Frontier™* materiality assessment framework.